

World 's largest Human Derma Tissue Bank



TPL Path Labs, your CRO in histopathology services, supports customers conducting preclinical and clinical studies in a GLP/GCLP - compliant audited facility.

Besides being focussed on Toxicological studies, we are also specialised in gene expression profiling using ISH and FISH as well as TCR and Immunohistochemistry, especially in the field of new biomarker validation.

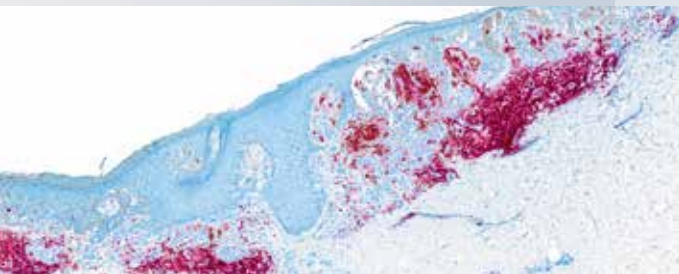
Our newly established **Human Derma Tissue Bank** will assist you in your drug and biomarker development:

Highest quality FFPE archive tissue

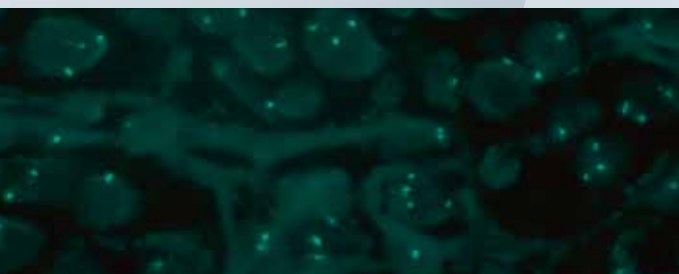
- Contains more than 1.000.000 samples in house
- Source: ISO 9001:2008 certified histopathological laboratory
- Standardised bio specimen collection and processing
- Fully diagnosed by human pathologists

Wide range of diseased and normal human skin specimens

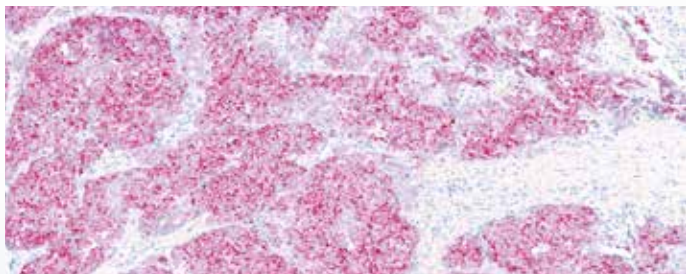
- More than 200 diseases covered, including
 - ▶ Benign and malignant tumours
 - ▶ Inflammatory dermatoses and many more
- Provision of all tissue relevant clinical data



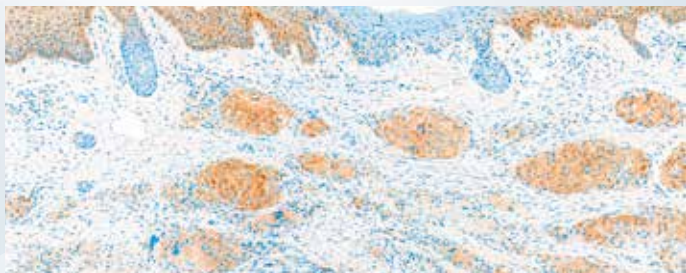
Malignant melanoma_IHC



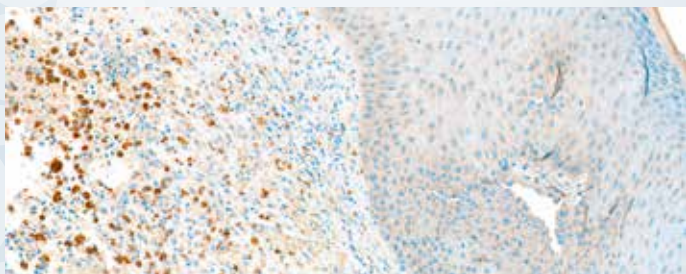
Malignant melanoma_FISH



Merkel cell carcinoma_ISH



Cutaneous sarcoidosis_IHC



Pyoderma fistulans_IHC

Easy access to samples and data

- Immediately available
- Anonymised
- Ethically approved

Suitable for a variety of applications,
also offered in our facility:

- Immunohistochemistry
- Biomarker validation
- RNAScope *in situ* Hybridisation
- Fluorescent *in situ* Hybridisation
- Nucleic acid isolations



TPL Path Labs
Sasbacher Straße 10 • 79111 Freiburg/Germany

info@tpl-path-labs.com • www.tpl-path-labs.com • +49 761 456 886 0