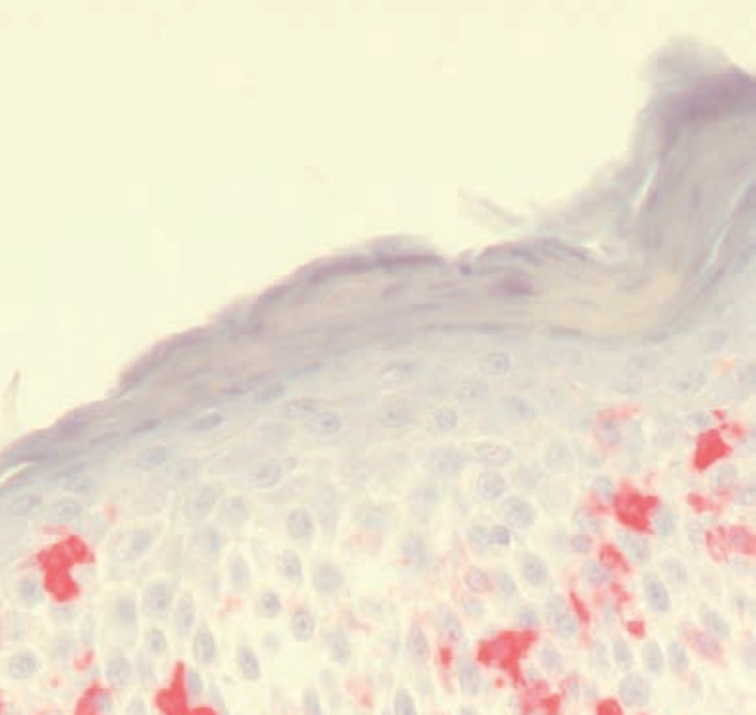




# Breaking News

The full  
service provider





# Drug development / Pharma

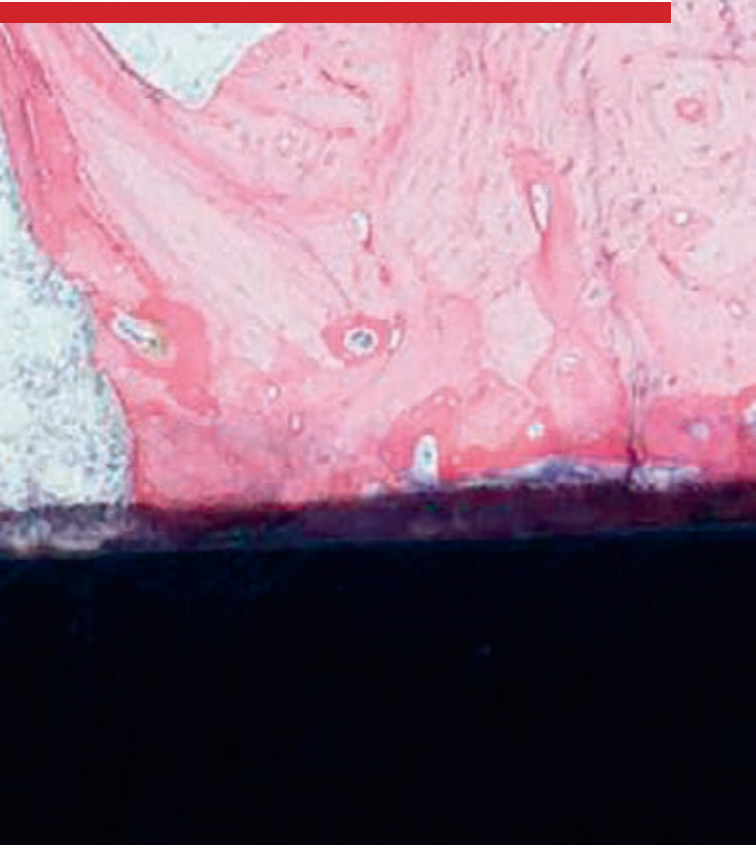
## Preclinical

TPL Path Labs now offers comprehensive services for drug/medicinal products developer for preclinical studies and provides in-live phase GLP-certified facilities for rodents such as mice, rats and guinea pigs. We have a dedicated team of skilled technical personnel to perform necropsies also at the sponsor´s site („flying necropsy team“). Subsequently, we offer process the tissue histologically and offer pathology services. We are now capable of providing the full services required for executing Tissue Cross Reactivity (TCR) studies according to the current guidelines.

# Medical Devices

We offer classic *in-vivo* toxicology studies by providing in-live phase GLP-certified facilities with mini pigs and rabbits for implant and device characterization according to ISO 10993.

In-vitro biocompatibility tests are indispensable for preclinical validation of medical devices we perform for you. We also perform human-tissue specific 2D and 3D cell culture models, e.g. as surface tolerability tests with respect to surface roughness of new biomaterials. Surface roughness is a particularly important factor for therapeutic success in the development of implants.



# Cosmetics

We now offer monolayer (2D) as well as in human tissue-specific 3D *in-vitro* cell culture-based studies using human *in-vivo*-like methods, thus we made a big step into this direction to “Replace” animal experiments.

More than 1 million human skin tissue FFPE samples of our Human Skin Tissue Bank cover a wide range of disease types e.g. tumors (benign and malignant), inflammatory skin diseases, drug side effects and autoimmune dermatoses of highest quality tissue which were derived from a particular ISO 9001:2008 certified histopathological laboratory in Europe and were resourced according to standardised bio specimen collection and processing procedures.



# Consulting Services and Audits

TPL Path Labs provides experienced personnel, that assists with respect to applicable legislation for drug/ medicinal products, medical devices and cosmetics development and also supports its authorizations and/or lifecycle maintenance activities. Audits according to EU GMP, GLP, GCLP, ISO 13485 and Data Integrity are our strenght.



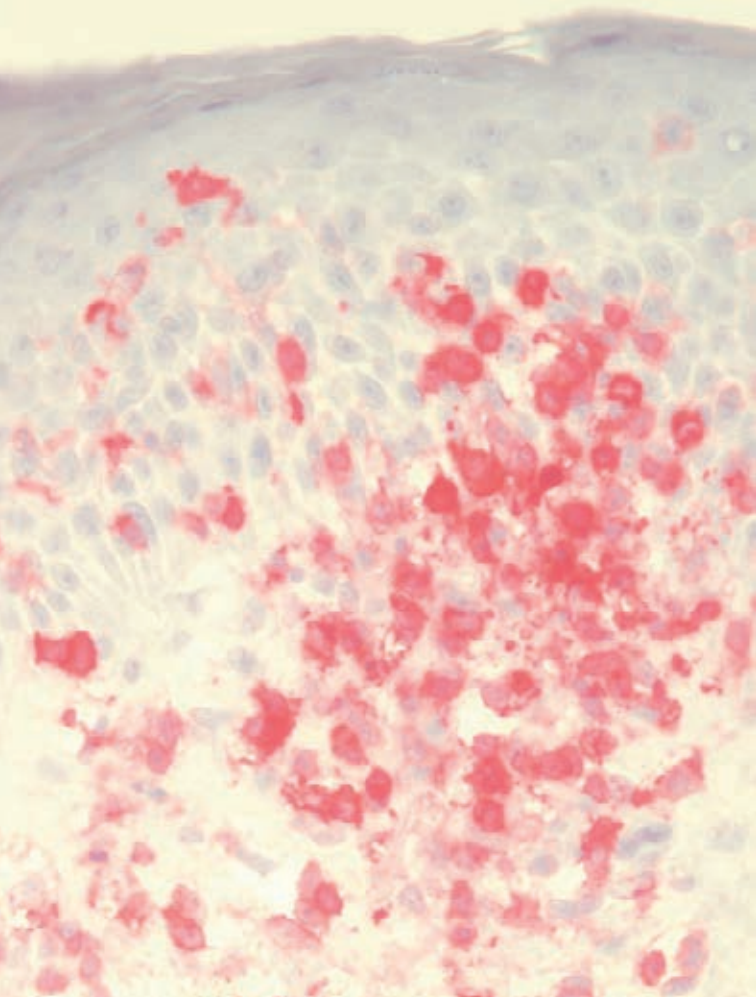
# Cutting edge technologies

Molecular pathology such as In Situ Hybridisation (ISH), Next Generation Sequencing (NGS), Fluorescence In Situ Hybridisation, (FISH), and also traditional Immunohistochemistry (IHC), Direct Immunofluorescence (DIF), and Digital Image Analysis (DIA), next to experienced human and veterinary pathologists for discovery and routine toxicological pathology slide evaluation and reporting extend our portfolio of services.



Further informations and contact:

[www.tpl-path-labs.com](http://www.tpl-path-labs.com)



## Clinical

Discovery and exploratory Biomarker Companion Diagnostics (CDx) development and In Vitro Diagnostics experts support your analytical and clinical performance studies as well as the regulatory pathway for approval for CDx.

We offer clinical studies as well as immunohistology, validation of antibodies, In situ Hybridisation, Fluorescence In situ Hybridisation and currently developing cell culture-based safety studies and Next Generation Sequencing.



TPL Path Labs  
Sasbacher Straße 10 • 79111 Freiburg/Germany

[info@tpl-path-labs.com](mailto:info@tpl-path-labs.com) • [www.tpl-path-labs.com](http://www.tpl-path-labs.com) • +49 761 456 886 0